



A  
NEW  
SHAPE OF  
LUXURY  
UNFOLDS  
IN TOA  
PAYOH

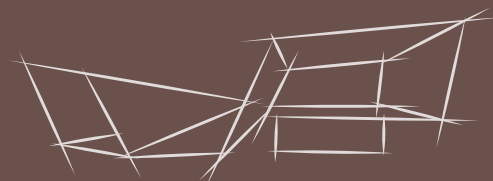
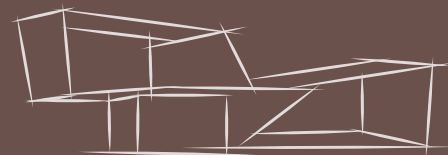
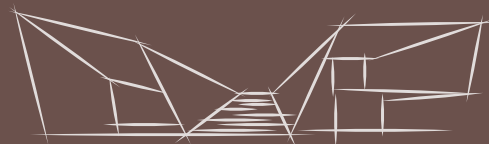
# UNPARALLELED IN EVERY ASPECT

Shaping a new benchmark for aspirational living in Toa Payoh, The Orie is a luxurious condominium that offers the perfect blend of modern sophistication nestled within the charms of a beloved neighbourhood.

The Orie is inspired by the traditional art of origami where delicate and precise folding techniques transform the familiar into something inspiring.

This design principle is reflected throughout the architectural style of The Orie with its origami-like folds and distinct angular expressions.

From the distinct arrival court to its angular clubhouse and into your home, The Orie redefines luxury living on your terms.



CLUB ORIE

ARTIST'S IMPRESSION



# EXCEPTIONAL ON EVERY LEVEL

## CAPTIVATING FROM EVERY PERSPECTIVE

The Orie creates an unparalleled architectural statement. Rising with sleek precision, the twin 40-storey towers feature distinctively angled ledges and elegant vertical fins that shape a dynamic, modern silhouette. The two towers are configured to offer panoramic views.

More than a design language, the origami-inspired theme creates a unique architectural rhythm, balancing bold aesthetics with purposeful functionality.







# DESIRABLE FROM EVERY ANGLE

## FINESSED WITH EVERY FOLD

Bask in the good life within the Central Garden Zone and soak in an oasis of tranquility centred around a 50m lap pool, surrounded by lush greenery.

Indulge your senses amid idyllic garden cabanas, an elegant rain tree lounge and a beautiful poolside lounge. Enjoy shaded relaxation areas in a haven for leisure and tranquility where the timeless wonder of nature integrates seamlessly with its contemporary design.

The Club Orie's striking origami-inspired planes and generous gathering spaces include a grand function room, a gymnasium and viewing deck. Beautifully blending form and function, this refined, tranquil atmosphere enhances the living experience in this unique community.







RELAXATION POOL

ARTIST'S IMPRESSION

#### Gather and celebrate at the Social Garden Zone

Wind down by the relaxation pool, a soothing and luxurious retreat featuring a floating deck, an aqua lounge and spa cove with jets for hydrotherapy.

Overlooking the relaxation pool, are the social and festive function rooms, perfect venues for joyful occasions. Besides celebrating in style, you can recharge in comfort at the leisure studio, entertainment room and gourmet pavilions or park yourself in a cozy spot when working remotely in the co-working lounge.

Poised elegantly above the function rooms is the Canopy Garden Zone, a space for rejuvenation that is adorned with a garden lounge, a meditation deck and spice gardens.



CO-WORKING LOUNGE

ARTIST'S IMPRESSION

## RELAXING IN EVERY FEATURE

## LUMINOUS IN EVERY REFLECTION



ARTIST'S IMPRESSION



FOR ILLUSTRATION ONLY

The architectural and landscape design at The Orie is seamlessly integrated through a concept of layered greenery and spatial zones. Treasure quiet moments at the Serenity Garden Zone. Serenity pods and boardwalk complete the calming experience of unwinding and relaxing.

The conserved Rain Trees and Narra Tree in the development, along with the Social Garden Zone, draw inspiration from the serene beauty of nature. This curated canvas of communal facilities is a thoughtful nod to Toa Payoh's heritage charm.





FOR ILLUSTRATION ONLY

## PRECISION WITH EVERY SERVE

## INVIGORATING WITH EVERY WORKOUT



FOR ILLUSTRATION ONLY



GYMNASIUM

ARTIST'S IMPRESSION



FOR ILLUSTRATION ONLY



GOURMET PAVILION

ARTIST'S IMPRESSION

### Elevate Your Active Lifestyle

Stay active and fit in a refreshing, natural environment surrounded by an array of lifestyle facilities. Workout with zest in the gymnasium overlooking the pool or serve with confidence on the tennis court before taking a refreshing dip in the resplendent 50m lap pool.

### A Nostalgic Icon Reimagined

The Toa Payoh iconic dragon playground has been reimagined with a modern dragon playland while preserving its nostalgic charm. It invites both children and adults to experience a playful connection to Singapore's beloved landmark.

The Play Garden Zone is home to both the dragon playland and the pets corner on different levels, providing families with a welcoming environment for all generations to bond and enjoy.

### Stylish Dining in Scenic Bliss

Three gourmet pavilions exude charm and sophistication as stylish destinations for outdoor dining, blending culinary pleasures within a natural haven.



DRAGON PLAYLAND

ARTIST'S IMPRESSION



# A BELOVED NEIGHBOURHOOD TRANSFORMING AROUND YOU



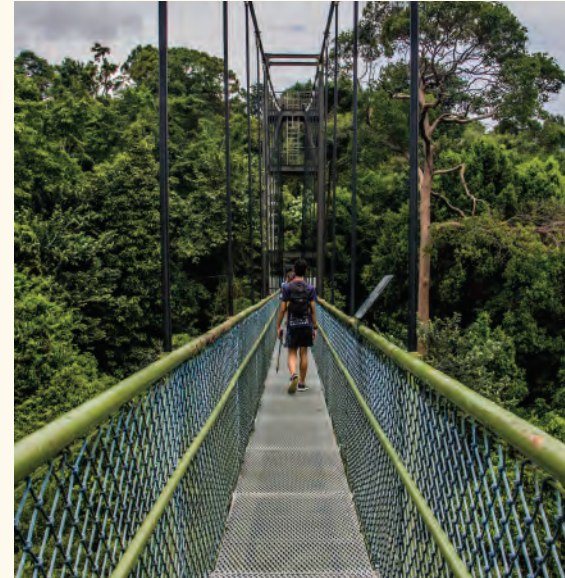
ARTIST'S IMPRESSION





# EVERYTHING TO ENJOY TODAY

# MORE TO LOVE TOMORROW



As one of Singapore's most established residential estates, Toa Payoh has evolved into a vibrant hub while retaining its community charm. With accessible healthcare, parks, sports complexes, and diverse shopping and dining options, it offers residents convenience and comfort. The rejuvenation of Toa Payoh continues with a new 12-hectare lifestyle destination and integrated development, slated for completion by 2030. This development is set to include a sports centre with swimming pools, indoor sports halls, sheltered tennis, futsal and netball courts, a gym, fitness studios and a football stadium, as well as polyclinic and public library, further enhancing its appeal for generations to come.



FOR ILLUSTRATION ONLY



FOR ILLUSTRATION ONLY



# YESTERDAY'S FAVOURITES

# TOMORROW'S DELIGHTS

A vibrant, liveable town with something for everyone, whether you are a longtime resident or have newly arrived. Discover the unique charm of old meets new, from traditional kopitiams to trendy artisan cafes, concept ice-cream parlours and nostalgic roadside ice-cream uncles. In Toa Payoh, familiar memories blend seamlessly with fresh experiences.



Schools in Toa Payoh are more than just rich in history—they form the heart of the community and create a sense of belonging as generations of families attend the same schools, fostering continuity and deep familial ties. Several schools such as Pei Chun Public School, St. Joseph's Institution International and Raffles Institution are conveniently located in the vicinity.



FOR ILLUSTRATION ONLY



FOR ILLUSTRATION ONLY





FOR ILLUSTRATION ONLY

A woman with dark hair, wearing a black and white patterned shirt, stands behind a stall. The stall is filled with various goods, including flowers, produce, and other items. The background is a busy market scene with many other stalls and people. The text "FOR ILLUSTRATION ONLY" is overlaid at the bottom of the image.



FOR ILLUSTRATION ONLY



Braddell MRT Station  
Toa Payoh MRT Station & Bus Interchange  
Bishan MRT Interchange (NSL & CCL)  
Caldecott MRT Interchange (CCL & TEL)  
Newton MRT Interchange (NSL & DTL)  
Central Expressway (CTE)  
Pan Island Expressway (PIE)

Toa Payoh Sensory Park  
Toa Payoh Public Library  
SAFRA Toa Payoh  
Bishan-Ang Mo Kio Park  
MacRitchie Reservoir

Chung Hwa Medical Institution Toa Payoh HQ  
Toa Payoh Polyclinic  
Mount Alvernia Hospital  
Mount Elizabeth Novena Hospital  
National Skin Centre  
Ren Ci Community Hospital  
Tan Tock Seng Hospital  
Thomson Medical Centre

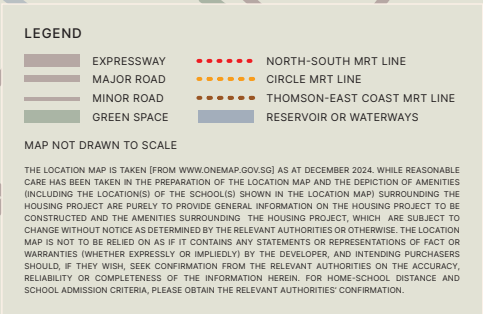
HDB Hub  
Toa Payoh Town Centre  
Toa Payoh Palm Spring Market & Hawker Centre  
Toa Payoh West Market & Food Centre  
Toa Payoh Vista Market  
Toa Payoh Lor 5 Food Centre  
Toa Payoh Lor 8 Market & Food Centre  
Kim Keat Palm Market & Food Centre

1 MRT stop  
Junction 8

**2 MRT stops**  
Novena Square  
Novena Square 2  
United Square  
Velocity

**4 MRT stops**  
Orchard Road

Beatty Secondary School  
 CHIJ Primary & Secondary (Toa Payoh)  
 First Toa Payoh Primary School  
 Kheng Cheng School  
 Pei Chun Public School  
 Raffles Girls' School (Secondary)  
 Raffles Institution  
 St. Joseph's Institution International







# A CANVAS TO CREATE THE COLOURS OF YOUR LIFE

Thoughtfully designed with functional layouts to maximise your living comfort, The Orie caters to different lifestyle needs with a selection of well-appointed homes —ranging from 1-bedroom + study to 5-bedroom units. Sleek finishes, warm neutrals and rich textures combine to create spaces that are inviting and luxurious, perfectly suited to a contemporary lifestyle.

Dining at home begins with a well-equipped kitchen featuring De Dietrich hood, hob, oven, and Samsung refrigerator, while laundry becomes a breeze with Samsung washer dryer. For the 5-bedroom units, an undercounter wine chiller adds a touch of sophistication to your space.



## INSPIRING AT EVERY MOMENT

## POLISHED IN EVERY DETAIL







FOR ILLUSTRATION ONLY

# INVITING IN EVERY ROOM

# SUBLIME IN EVERY FORM

## Luxury Perfected for Sweet Dreams

A good night's rest is one of life's true luxuries. Modern, inviting interiors designed with premium materials and finishes make every bedroom a luxurious sanctuary.



FOR ILLUSTRATION ONLY



## Sanctuaries of Modern Comfort

Another luxury in life is to start and end each day in style. Indulge in the privacy of your bathroom designed with spacious vanity counters, finished with shower fittings by Hansgrohe and bathroom wares from Duravit.



FOR ILLUSTRATION ONLY



Get used to having your way with smart features that make your life at The Orie even better. Control them remotely via the Smart Home app on your mobile device.

Smart Home



Smart Air Con Control

Hot day? Turn on the air conditioning remotely and have the home cooled in preparation for your return.



Smart Lighting Control

Schedule the lights to come on automatically or check if you have forgotten to turn them off.



Smart Digital Lockset

Enjoy the convenience of locking or unlocking the door remotely. You can also use PIN, biometrics, key or access card.



Smart Surveillance

Enjoy the added security of remote surveillance with an IP camera.



Smart Voice Control

(Using Google Home App)

Handsfree control of your smart home devices. Voice assistant also lets you ask about the news, weather, traffic, set reminders, play music, and more.



Smart Door Sensor

Receive notification via the Smart Home app when the main door is opened or closed.



Smart Home Gateway

Connects all compatible smart home devices, allowing you to control them remotely via the Smart Home app on your mobile device.



Smart Home: The unit will be provided with the following items: (a) smart home system gateway, (b) air-conditioning controls for selected air-conditioner units, (c) smart lighting control module for selected lighting points, (d) smart digital lockset, (e) smart IP camera, (f) wireless door contact and (g) smart voice control (using Google home app) (collectively, "SMART Home System"). The make, model, brand, design and technology of the SMART Home System to be supplied and installed in the actual unit may differ from the above illustration and are subject to change. Terms and conditions apply. Buyers are required to liaise with the smart home vendor to make all arrangements for the set-up, configuration, subscription and use of the SMART Home System and for any queries, maintenance and/or upgrade issues with the SMART Home System. Additional items/devices which are not listed above are not included in SMART Home System and may be purchased from the smart home vendor directly and installed at buyers' own costs after the handover of the unit.

SMART THINKING BEGETS SMART LIVING

Smart Community



Smart Booking/Payment

Check on the availability and pay for the booking of facilities.



Smart Invite

Pre-register your visitors and generate a QR invite to allow them easy entry to the development.



Smart Audio Video Telephony

Let visitors announce their arrival at the lift lobby so you can let them in with a simple tap.



Smart Car Plate Recognition

Give your visitors seamless access by pre-registering their car plate numbers.

Residential Services

Completing your life with ease, our team of Residential Hosts are on hand to provide seamless assistance. From your day-to-day needs such as parcel collection, arranging for laundry and transport bookings; to special occasions like catering for parties, restaurant reservations and more—it's all taken care of.



Residential Services: Please note that the use of these services and facilities are chargeable as they are provided by third party service providers ("Service Providers"). While our Residential Host will assist in making arrangements, all costs incurred for use of these services and facilities are to be borne by residents. Provision of these services and facilities may be modified according to availability and at the discretion of the Service Providers. The Service Providers also reserve the right to terminate the services and facilities without prior notice. Other terms and conditions apply. Visual representations are not representations of the actual provision.



EMBRACING SUSTAINABILITY THROUGH EVERY DESIGN



Energy-Efficient Design

- › Building oriented for good natural ventilation in the common areas
- › Building facade designed with North-South orientation to reduce solar heat gain
- › Residential units have balconies and/or horizontal ledges which provide shade for the interiors
- › Central recessed opening provides good natural ventilation to the lift lobbies and residential corridors
- › Staggered placement of the tower blocks allows for comfortable air movement throughout the development



Energy-Efficient Features

- › Energy-efficient air-conditioning system for all residential units
- › Energy-efficient lighting design with use of LED lighting and motion sensors at common areas
- › Energy-efficient lifts with regenerative drive, VVVF (variable voltage variable frequency) drive and sleep function mode
- › Provision of renewable energy to offset partial common area consumption



Awarded BCA Green Mark Platinum Super Low Energy (SLE) Certification



Water-Efficient Features

- › Water-efficient sanitary fittings in all residential units



Environmental Quality and Protection

- › Use of environmentally friendly and sustainable materials certified by approved local certification bodies
- › Low Volatile Organic Compounds (VOC) paints for all common areas internal walls to ensure healthy indoor air quality
- › Landscape and water features at the podium reduce urban heat build-up at the public realm to create a cooler and comfortable environment



Other Green Features

- › Smart home with smart community system for residents' comfort and convenience
- › Carbon monoxide sensors to modulate car park ventilation
- › Provision of EV charging stations to reduce carbon footprint and emissions
- › Provision of bicycle parking lots to promote green transport and healthy lifestyle
- › Pneumatic waste collection and disposal system
- › Recycling bins for collection of recyclable waste



SCHEMATIC DIAGRAM

BLOCK 10 LORONG 1 TOA PAYOH  
SINGAPORE 319974

UNIT/ FLOOR	01	02	03	04	05	06	07	08	09	10
40	B2	E1	C3DK	A1S	B1	C1	C2A	D1	B4S	B3
39	B2	E1	C3DK	A1S	B1	C1	C2A	D1	B4S	B3
38	B2	E1	C3DK	A1S	B1	C1	C2A	D1	B4S	B3
37	B2	E1	C3DK	A1S	B1	C1	C2A	D1	B4S	B3
36	B2	E1	C3DK	A1S	B1	C1	C2A	D1	B4S	B3
35	B2	E1	C3DK	A1S	B1	C1	C2A	D1	B4S	B3
34	B2	E1	C3DK	A1S	B1	C1	C2A	D1	B4S	B3
33	B2	E1	C3DK	A1S	B1	C1	C2A	D1	B4S	B3
32	B2	E1	C3DK	A1S	B1	C1	C2A	D1	B4S	B3
31	B2	E1	C3DK	A1S	B1	C1	C2A	D1	B4S	B3
30	B2	E1	C3DK	A1S	B1	C1	C2A	D1	B4S	B3
29	B2	E1	C3DK	A1S	B1	C1	C2A	D1	B4S	B3
28	B2	E1	C3DK	A1S	B1	C1	C2A	D1	B4S	B3
27	B2	E1	C3DK	A1S	B1	C1	C2A	D1	B4S	B3
26	B2	E1	C3DK	A1S	B1	C1	C2A	D1	B4S	B3
25	B2	E1	C3DK	A1S	B1	C1	C2A	D1	B4S	B3
24	B2	E1	C3DK	A1S	B1	C1	C2A	D1	B4S	B3
23	B2	E1	C3DK	A1S	B1	C1	C2A	D1	B4S	B3
22	B2	E1	C3DK	A1S	B1	C1	C2A	D1	B4S	B3
21	B2	E1	C3DK	A1S	B1	C1	C2A	D1	B4S	B3
20	B2	E1	C3DK	A1S	B1	C1	C2A	D1	B4S	B3
19	B2	E1	C3DK	A1S	B1	C1	C2A	D1	B4S	B3
18	B2	E1	C3DK	A1S	B1	C1	C2A	D1	B4S	B3
17	B2	E1	C3DK	A1S	B1	C1	C2A	D1	B4S	B3
16	B2	E1	C3DK	A1S	B1	C1	C2A	D1	B4S	B3
15	B2	E1	C3DK	A1S	B1	C1	C2A	D1	B4S	B3
14	B2	E1	C3DK	A1S	B1	C1	C2A	D1	B4S	B3
13	B2	E1	C3DK	A1S	B1	C1	C2A	D1	B4S	B3
12	B2	E1	C3DK	A1S	B1	C1	C2A	D1	B4S	B3
11	B2	E1	C3DK	A1S	B1	C1	C2A	D1	B4S	B3
10	B2	E1	C3DK	A1S	B1	C1	C2A	D1	B4S	B3
09	B2	E1	C3DK	A1S	B1	C1	C2A	D1	B4S	B3
08	B2	E1	C3DK	A1S	B1	C1	C2A	D1	B4S	B3
07	B2	E1	C3DK	A1S	B1	C1	C2A	D1	B4S	B3
06	B2	E1	C3DK	A1S	B1	C1	C2A	D1	B4S	B3
05	B2	E1	C3DK	A1S	B1	C1	C2A	D1	B4S	B3
04	B2	E1	C3DK	A1S	B1	C1	C2A	D1	B4S	B3
03	B2	E1	C3DK	A1S	B1	C1	C2A	D1	B4S	B3
02			C3DK	A1S	B1	C1	C2A	D1	B4S	

- 1-Bedroom + Study
- 2-Bedroom
- 2-Bedroom Premium
- 2-Bedroom Premium + Study
- 3-Bedroom
- 3-Bedroom Premium
- 3-Bedroom Dual Key
- 4-Bedroom
- 4-Bedroom Premium + Study
- 5-Bedroom



SCAN QR CODE  
TO ACCESS UNIT  
SPECIFICATIONS

BLOCK 12 LORONG 1 TOA PAYOH  
SINGAPORE 319975

UNIT/ FLOOR	11	12	13	14	15	16	17	18	19	20
40	B2	E1	C2	A1S	B1	C1	D2	D3S	B4S	B3
39	B2	E1	C2	A1S	B1	C1	D2	D3S	B4S	B3
38	B2	E1	C2	A1S	B1	C1	D2	D3S	B4S	B3
37	B2	E1	C2	A1S	B1	C1	D2	D3S	B4S	B3
36	B2	E1	C2	A1S	B1	C1	D2	D3S	B4S	B3
35	B2	E1	C2	A1S	B1	C1	D2	D3S	B4S	B3
34	B2	E1	C2	A1S	B1	C1	D2	D3S	B4S	B3
33	B2	E1	C2	A1S	B1	C1	D2	D3S	B4S	B3
32	B2	E1	C2	A1S	B1	C1	D2	D3S	B4S	B3
31	B2	E1	C2	A1S	B1	C1	D2	D3S	B4S	B3
30	B2	E1	C2	A1S	B1	C1	D2	D3S	B4S	B3
29	B2	E1	C2	A1S	B1	C1	D2	D3S	B4S	B3
28	B2	E1	C2	A1S	B1	C1	D2	D3S	B4S	B3
27	B2	E1	C2	A1S	B1	C1	D2	D3S	B4S	B3
26	B2	E1	C2	A1S	B1	C1	D2	D3S	B4S	B3
25	B2	E1	C2	A1S	B1	C1	D2	D3S	B4S	B3
24	B2	E1	C2	A1S	B1	C1	D2	D3S	B4S	B3
23	B2	E1	C2	A1S	B1	C1	D2	D3S	B4S	B3
22	B2	E1	C2	A1S	B1	C1	D2	D3S	B4S	B3
21	B2	E1	C2	A1S	B1	C1	D2	D3S	B4S	B3
20	B2	E1	C2	A1S	B1	C1	D2	D3S	B4S	B3
19	B2	E1	C2	A1S	B1	C1	D2	D3S	B4S	B3
18	B2	E1	C2	A1S	B1	C1	D2	D3S	B4S	B3
17	B2	E1	C2	A1S	B1	C1	D2	D3S	B4S	B3
16	B2	E1	C2	A1S	B1	C1	D2	D3S	B4S	B3
15	B2	E1	C2	A1S	B1	C1	D2	D3S	B4S	B3
14	B2	E1	C2	A1S	B1	C1	D2	D3S	B4S	B3
13	B2	E1	C2	A1S	B1	C1	D2	D3S	B4S	B3
12	B2	E1	C2	A1S	B1	C1	D2	D3S	B4S	B3
11	B2	E1	C2	A1S	B1	C1	D2	D3S	B4S	B3
10	B2	E1	C2	A1S	B1	C1	D2	D3S	B4S	B3
09	B2	E1	C2	A1S	B1	C1	D2	D3S	B4S	B3
08	B2	E1	C2	A1S	B1	C1	D2	D3S	B4S	B3
07	B2	E1	C2	A1S	B1	C1	D2	D3S	B4S	B3
06	B2	E1	C2	A1S	B1	C1	D2	D3S	B4S	B3
05	B2	E1	C2	A1S	B1	C1	D2	D3S	B4S	B3
04	B2	E1	C2	A1S	B1	C1	D2	D3S	B4S	B3
03	B2	E1	C2	A1S	B1	C1	D2	D3S	B4S	B3
02	B2	E1	C2	A1S	B1	C1	D2	D3S	B4S	B3

SITE PLAN

GRAND ARRIVAL

BASEMENT 1

- 1 Arrival Court
- 2 Residential Services Counter
- 3 Grand Lobby

CLUB ORIE

LEVEL 1

- 4 Grand Function Room
- 5 Male/Female Steam Room  
(with Changing Room)

UPPER LEVEL 1

- 6 Gymnasium
- 7 Viewing Deck

CENTRAL GARDEN

LEVEL 1

- 8 Meadow Lounge
- 9 50m Lap Pool
- 10 Pool Deck
- 11 Poolside Lounge
- 12 Grand Lawn
- 13 Social Lounge
- 14 Water Feature
- 15 Garden Cabana
- 16 Rain Tree Lounge

SOCIAL GARDEN

UPPER LEVEL 1

- 22 Relaxation Pool
- 23 Floating Deck
- 24 Aqua Lounge
- 25 Spa Cove
- 26 Relaxation Deck
- 27 Social Function Room
- 28 Festive Function Room
- 29 Leisure Studio
- 30 Entertainment Room
- 31 Gourmet Pavilion 2
- 32 Gourmet Pavilion 3
- 33 Co-Working Lounge

Water Tank (Roof)

SERENITY GARDEN

LEVEL 1

- 17 Serenity Pod
- 18 Serenity Boardwalk
- 19 Gourmet Pavilion 1
- 20 Outdoor Fitness
- 21 Toddlers Play

PLAY GARDEN

BASEMENT 1

- 34 Pets Corner
- 35 Social Pavilion

UPPER LEVEL 1

- 36 Outdoor Reading Lounge
- 37 Meadow Garden
- 38 Garden Swing
- 39 Leisure Pavilion
- 40 Dragon Playland
- 41 Water Play Pool
- 42 Tennis Court

CANOPY GARDEN

LEVEL 2

- 43 Garden Lounge
- 44 Meditation Deck
- 45 Spice Garden

ANCILLARY

BASEMENT 1

- A Guardhouse
- B Side Gate

BASEMENT 2

- C Substation
- D Genset
- E Bin Centre

LEVEL 1

- F Ventilation Shaft



The renderings of the units as shown are for illustrative purposes only. The shading and outline of the unit type only applies to typical units. The boundary lines of the units set out here are not to be taken as a representation of the actual units. Kindly refer to the approved BP plans for the actual unit outline/boundary lines.

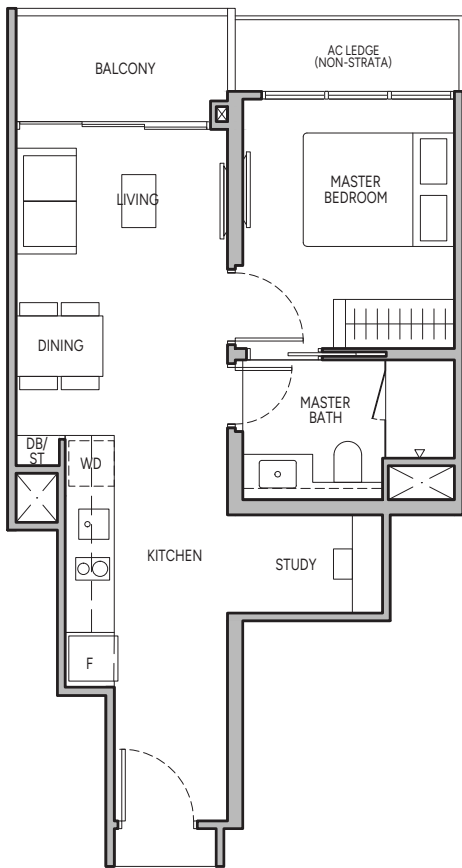


1-BEDROOM + STUDY

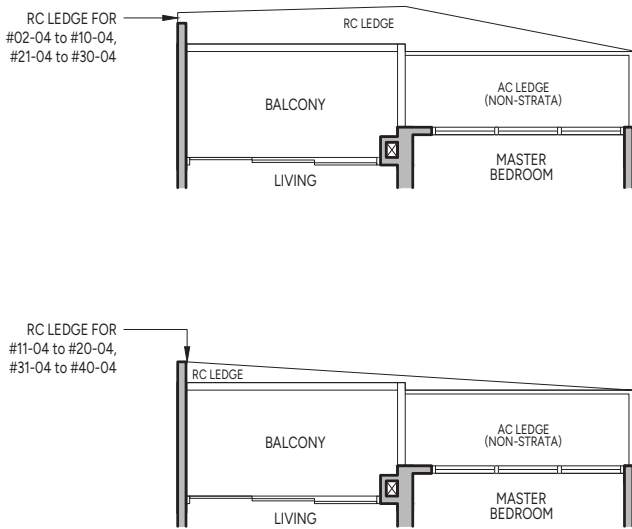
Type A1S

48 sq m / 517 sq ft

BLK 12 : #02-14 to #40-14

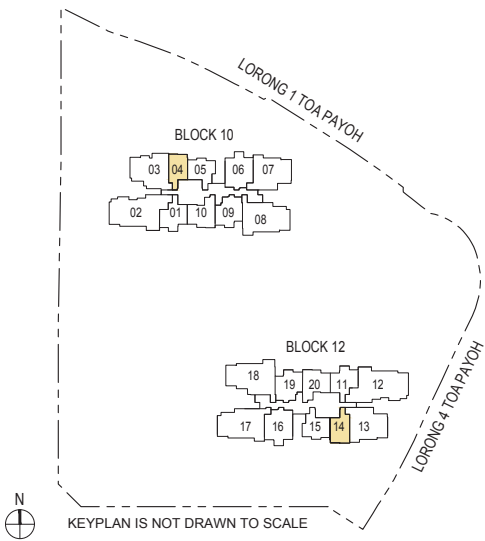


BLK 10 : #02-04 to #40-04



**Legend (Where Applicable)**  
DB/ST - Distribution Board/Storage  
WC - Water Closet  
WD - Washer cum Dryer  
HS - Household Shelter  
W/D - Washer & Dryer  
RC - Reinforced Concrete  
F - Fridge  
AC - Air-Conditioner  
Wall not allowed to be hacked or altered

Area includes balcony where applicable and excludes among others, the RC - Reinforced Concrete Ledge and A/C - Air Conditioner Ledge. The plans are subject to change as may be required by relevant authorities. All floor plans and areas are subject to final survey. The balcony shall not be enclosed unless with the approved balcony screen, more particularly illustrated under the header "Approved Balcony Screen". Please refer to the letter containing the Particulars, Documents and Information relating to the development and the unit for the floor plan relating to the unit you intend to purchase. The Sale and Purchase Agreement contains the entire agreement between the developer and the purchaser and supersedes and cancels in all respects all previous representations, warranties, promises, inducements or statements of intention, whether written or oral made by the developer and/or the developer's agent which are not embodied in the Sale and Purchase Agreement.

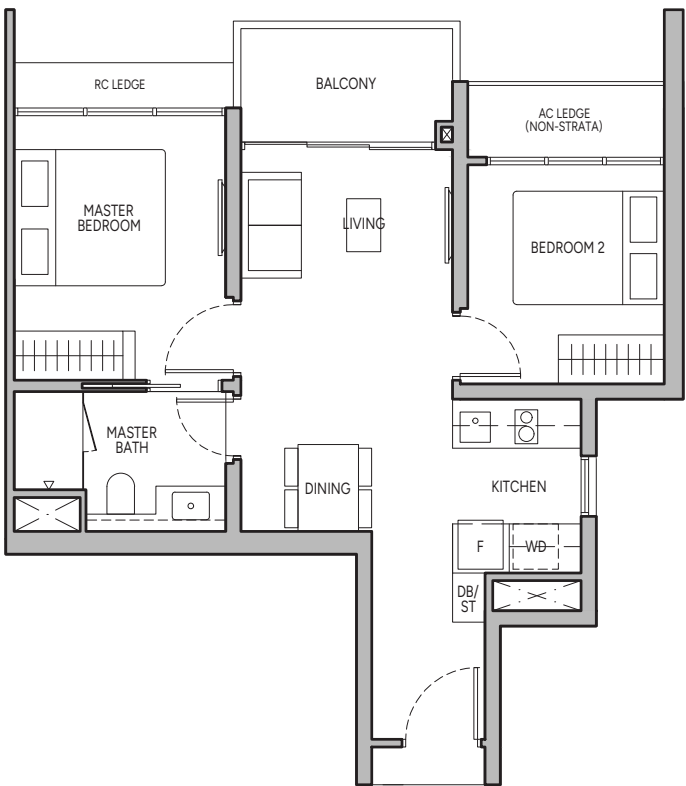


2-BEDROOM

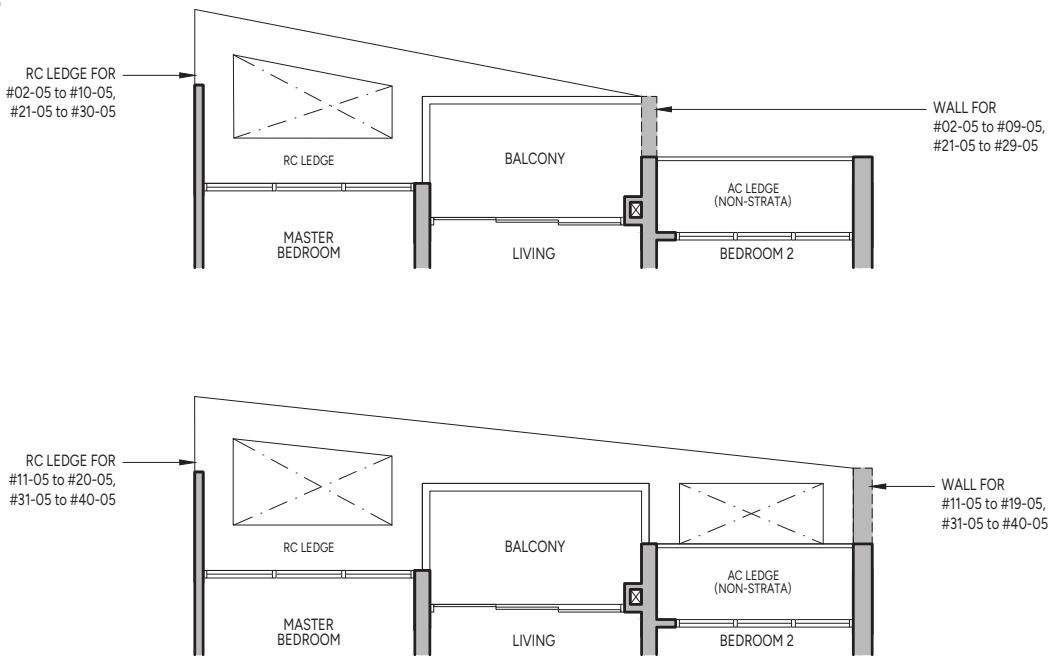
Type B1

55 sq m / 592 sq ft

BLK 12 : #02-15 to #40-15

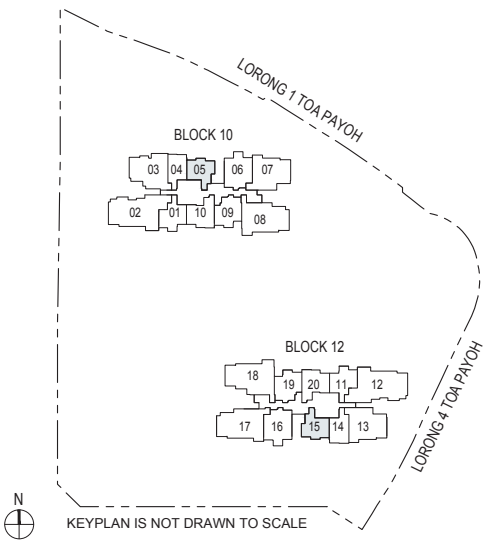


BLK 10 : #02-05 to #40-05



**Legend (Where Applicable)**  
DB/ST - Distribution Board/Storage  
WC - Water Closet  
WD - Washer cum Dryer  
HS - Household Shelter  
W/D - Washer & Dryer  
RC - Reinforced Concrete  
F - Fridge  
AC - Air-Conditioner  
Wall not allowed to be hacked or altered

Area includes balcony where applicable and excludes among others, the RC - Reinforced Concrete Ledge and A/C - Air Conditioner Ledge. The plans are subject to change as may be required by relevant authorities. All floor plans and areas are subject to final survey. The balcony shall not be enclosed unless with the approved balcony screen, more particularly illustrated under the header "Approved Balcony Screen". Please refer to the letter containing the Particulars, Documents and Information relating to the development and the unit for the floor plan relating to the unit you intend to purchase. The Sale and Purchase Agreement contains the entire agreement between the developer and the purchaser and supersedes and cancels in all respects all previous representations, warranties, promises, inducements or statements of intention, whether written or oral made by the developer and/or the developer's agent which are not embodied in the Sale and Purchase Agreement.



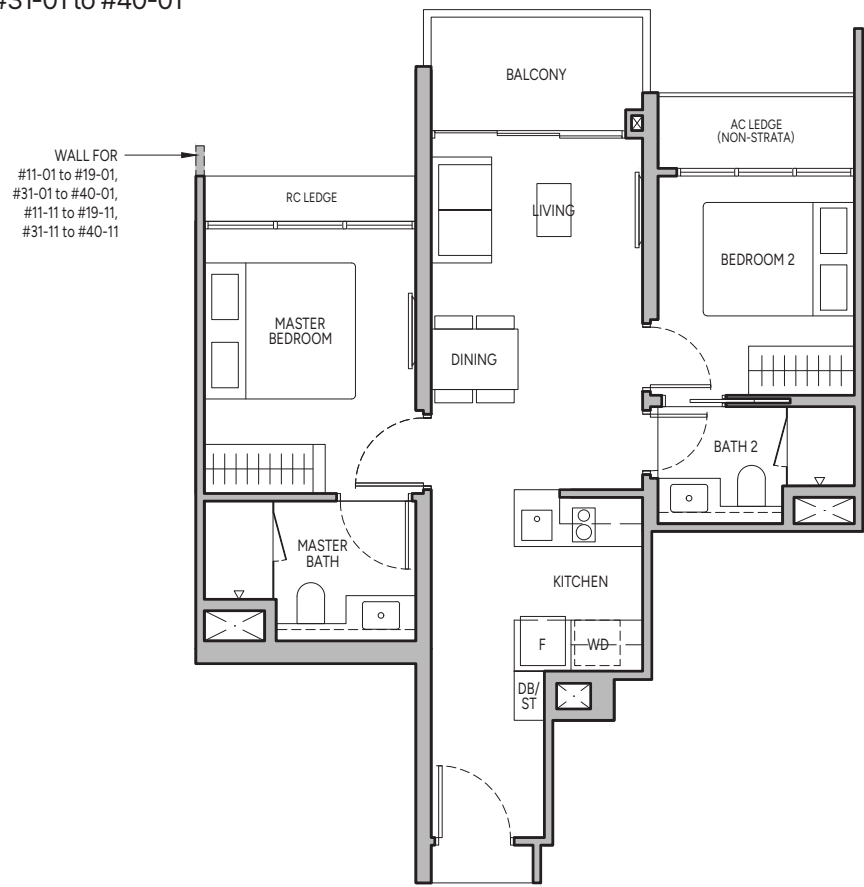


2-BEDROOM

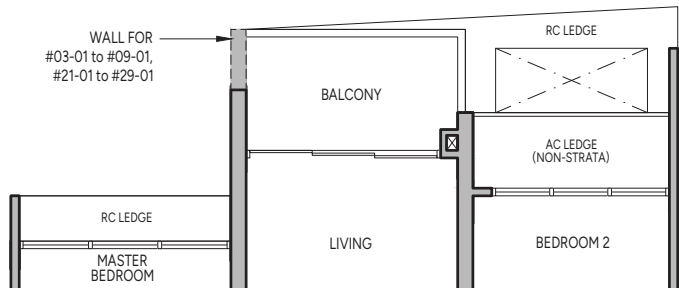
Type B2

60 sq m / 646 sq ft

BLK 10 : #11-01 to #20-01, #31-01 to #40-01  
BLK 12 : #02-11 to #40-11

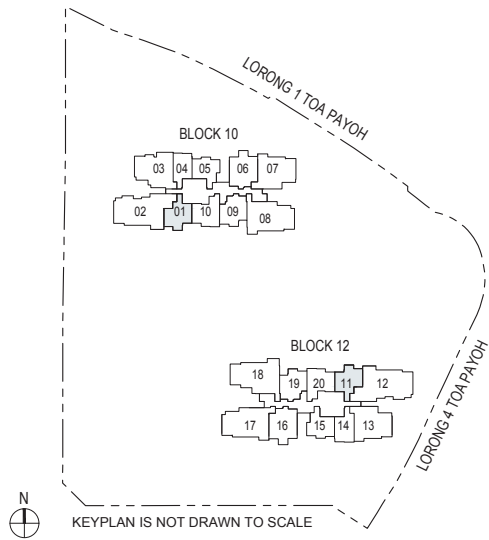


BLK 10 : #03-01 to #10-01, #21-01 to #30-01



**Legend (Where Applicable)**  
DB/ST - Distribution Board/Storage  
WC - Water Closet  
WD - Washer cum Dryer  
HS - Household Shelter  
W/D - Washer & Dryer  
RC - Reinforced Concrete  
F - Fridge  
AC - Air-Conditioner  
Wall not allowed to be hacked or altered

Area includes balcony where applicable and excludes among others, the RC - Reinforced Concrete Ledge and A/C - Air Conditioner Ledge. The plans are subject to change as may be required by relevant authorities. All floor plans and areas are subject to final survey. The balcony shall not be enclosed unless with the approved balcony screen, more particularly illustrated under the header "Approved Balcony Screen". Please refer to the letter containing the Particulars, Documents and Information relating to the development and the unit for the floor plan relating to the unit you intend to purchase. The Sale and Purchase Agreement contains the entire agreement between the developer and the purchaser and supersedes and cancels in all respects all previous representations, warranties, promises, inducements or statements of intention, whether written or oral made by the developer and/or the developer's agent which are not embodied in the Sale and Purchase Agreement.

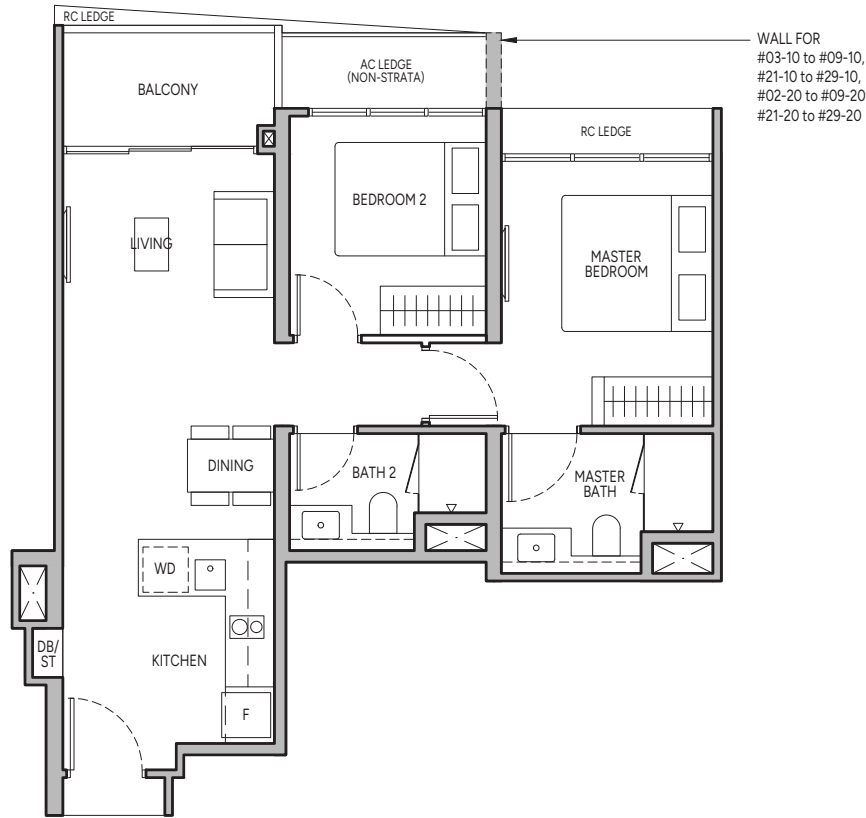


2-BEDROOM PREMIUM

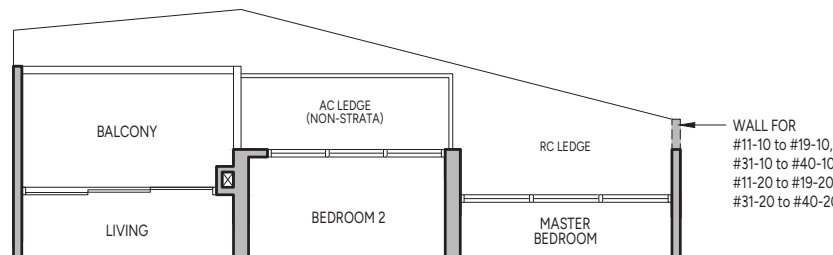
Type B3

63 sq m / 678 sq ft

BLK 10 : #03-10 to #10-10, #21-10 to #30-10  
BLK 12 : #02-20 to #10-20, #21-20 to #30-20

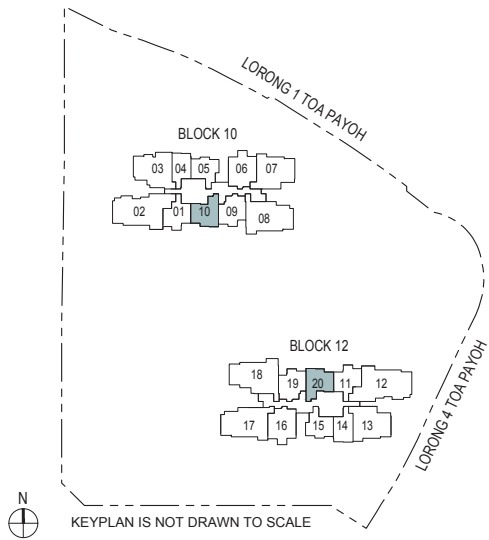


BLK 10 : #11-10 to #20-10, #31-10 to #40-10  
BLK 12 : #11-20 to #20-20, #31-20 to #40-20



**Legend (Where Applicable)**  
DB/ST - Distribution Board/Storage  
WC - Water Closet  
WD - Washer cum Dryer  
HS - Household Shelter  
W/D - Washer & Dryer  
RC - Reinforced Concrete  
F - Fridge  
AC - Air-Conditioner  
Wall not allowed to be hacked or altered

Area includes balcony where applicable and excludes among others, the RC - Reinforced Concrete Ledge and A/C - Air Conditioner Ledge. The plans are subject to change as may be required by relevant authorities. All floor plans and areas are subject to final survey. The balcony shall not be enclosed unless with the approved balcony screen, more particularly illustrated under the header "Approved Balcony Screen". Please refer to the letter containing the Particulars, Documents and Information relating to the development and the unit for the floor plan relating to the unit you intend to purchase. The Sale and Purchase Agreement contains the entire agreement between the developer and the purchaser and supersedes and cancels in all respects all previous representations, warranties, promises, inducements or statements of intention, whether written or oral made by the developer and/or the developer's agent which are not embodied in the Sale and Purchase Agreement.



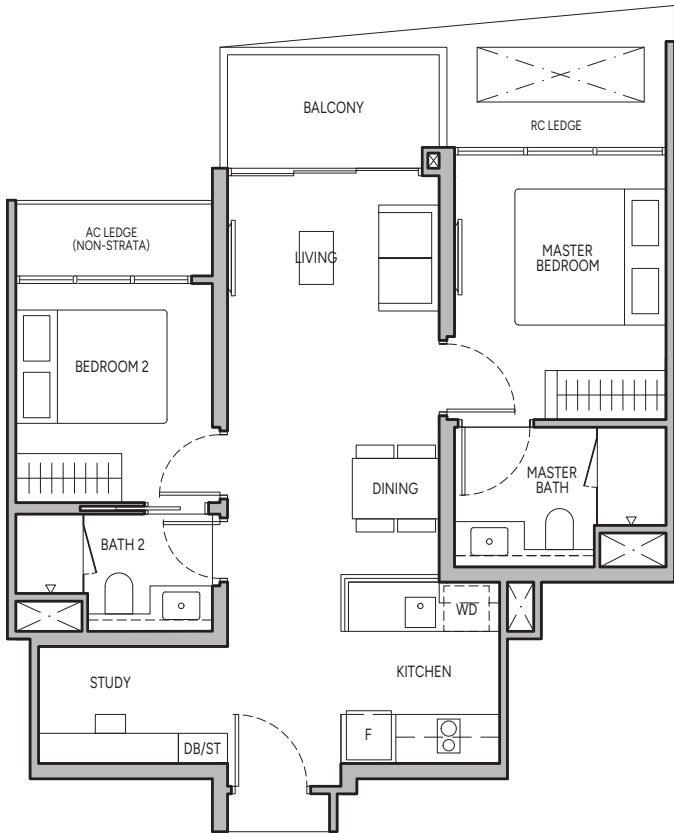


2-BEDROOM PREMIUM + STUDY

Type B4S

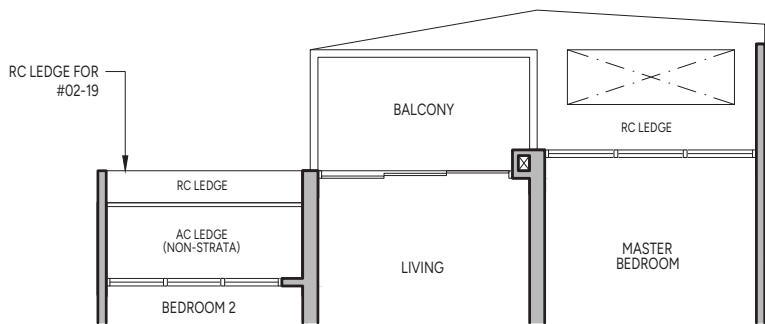
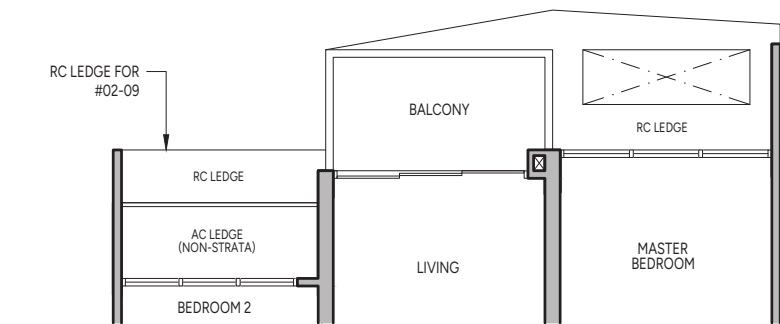
65 sq m / 700 sq ft

BLK 10 : #11-09 to #20-09, #31-09 to #40-09  
BLK 12 : #11-19 to #20-19, #31-19 to #40-19



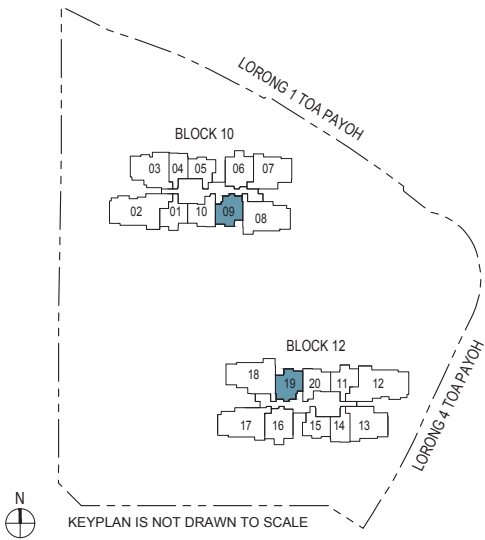
BLK 10 : #02-09 to #10-09, #21-09 to #30-09

BLK 12 : #02-19 to #10-19, #21-19 to #30-19



**Legend (Where Applicable)**  
DB/ST - Distribution Board/Storage  
WC - Water Closet  
WD - Washer cum Dryer  
HS - Household Shelter  
W/D - Washer & Dryer  
RC - Reinforced Concrete  
F - Fridge  
AC - Air-Conditioner  
Wall not allowed to be hacked or altered

Area includes balcony where applicable and excludes among others, the RC - Reinforced Concrete Ledge and A/C - Air Conditioner Ledge. The plans are subject to change as may be required by relevant authorities. All floor plans and areas are subject to final survey. The balcony shall not be enclosed unless with the approved balcony screen, more particularly illustrated under the header "Approved Balcony Screen". Please refer to the letter containing the Particulars, Documents and Information relating to the development and the unit for the floor plan relating to the unit you intend to purchase. The Sale and Purchase Agreement contains the entire agreement between the developer and the purchaser and supersedes and cancels in all respects all previous representations, warranties, promises, inducements or statements of intention, whether written or oral made by the developer and/or the developer's agent which are not embodied in the Sale and Purchase Agreement.

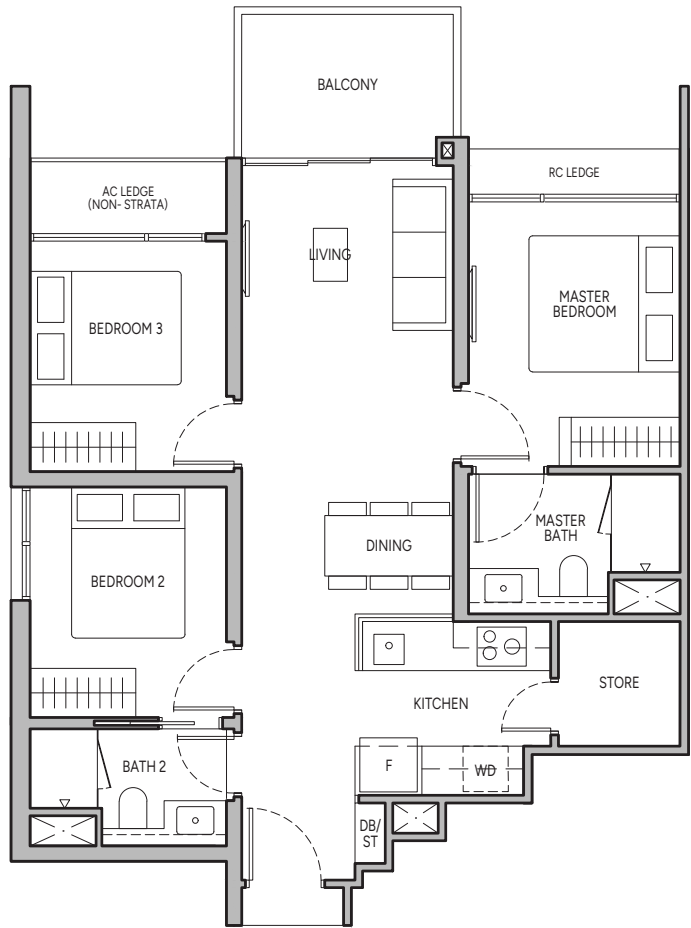


3-BEDROOM

Type C1

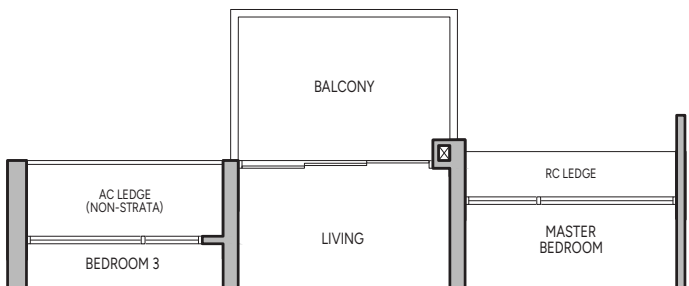
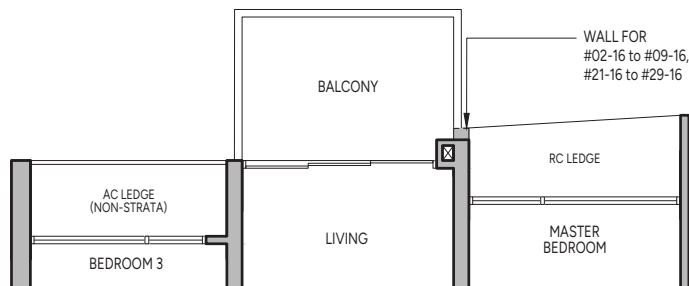
79 sq m / 850 sq ft

BLK 10 : #02-06 to #40-06



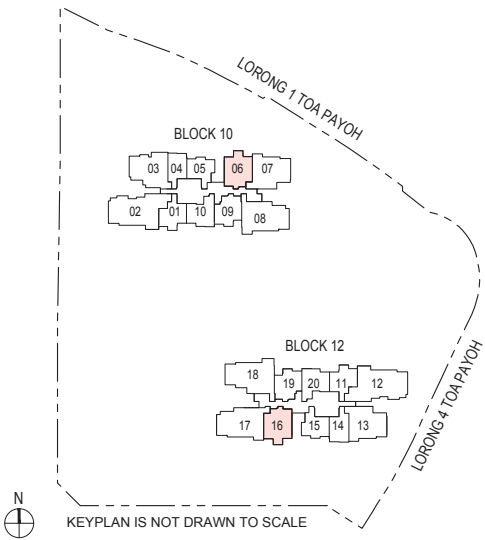
BLK 12 : #02-16 to #10-16, #21-16 to #30-16

BLK 12 : #11-16 to #20-16, #31-16 to #40-16



**Legend (Where Applicable)**  
DB/ST - Distribution Board/Storage  
WC - Water Closet  
WD - Washer cum Dryer  
HS - Household Shelter  
W/D - Washer & Dryer  
RC - Reinforced Concrete  
F - Fridge  
AC - Air-Conditioner  
Wall not allowed to be hacked or altered

Area includes balcony where applicable and excludes among others, the RC - Reinforced Concrete Ledge and A/C - Air Conditioner Ledge. The plans are subject to change as may be required by relevant authorities. All floor plans and areas are subject to final survey. The balcony shall not be enclosed unless with the approved balcony screen, more particularly illustrated under the header "Approved Balcony Screen". Please refer to the letter containing the Particulars, Documents and Information relating to the development and the unit for the floor plan relating to the unit you intend to purchase. The Sale and Purchase Agreement contains the entire agreement between the developer and the purchaser and supersedes and cancels in all respects all previous representations, warranties, promises, inducements or statements of intention, whether written or oral made by the developer and/or the developer's agent which are not embodied in the Sale and Purchase Agreement.



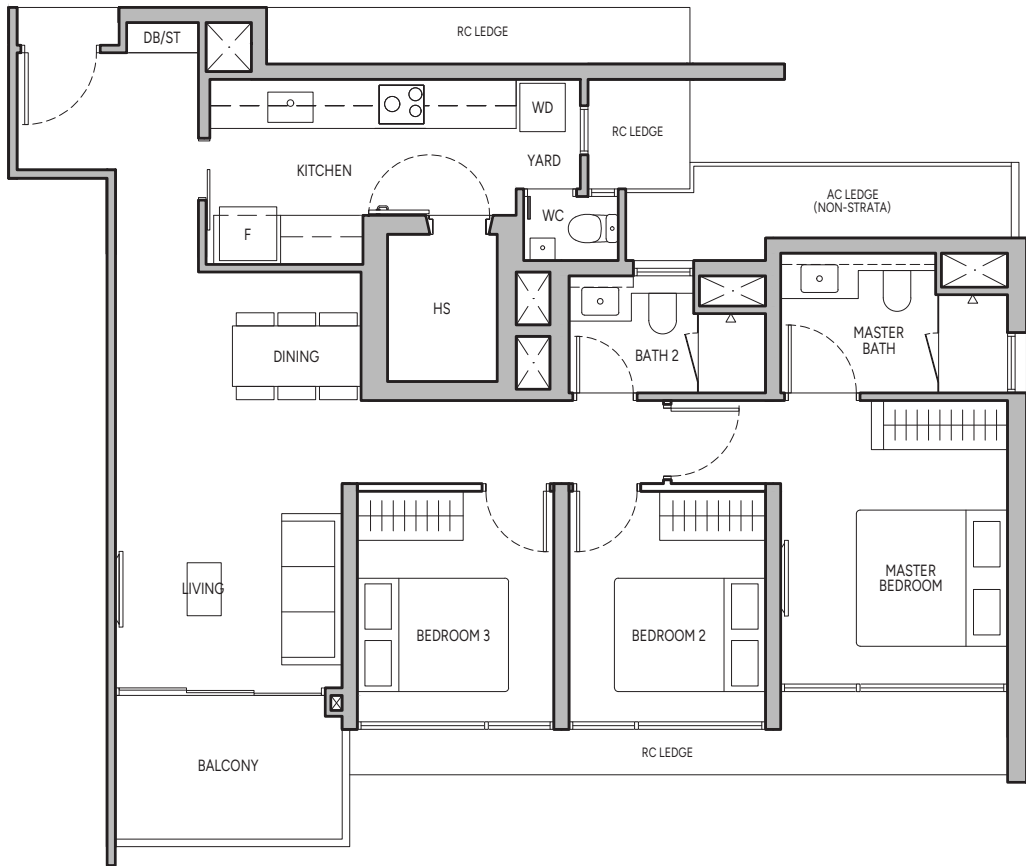


3-BEDROOM PREMIUM

Type C2

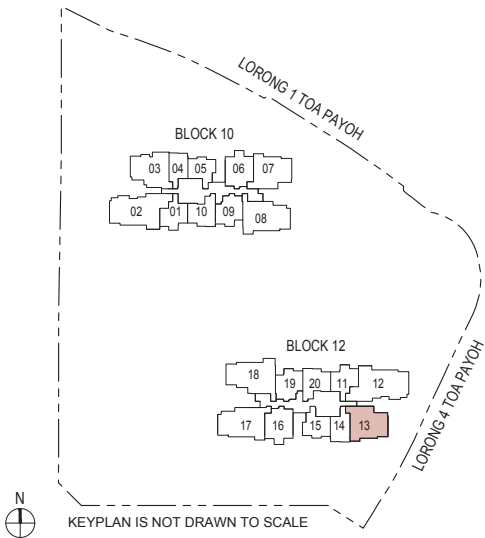
95 sq m / 1023 sq ft

BLK 12 : #02-13 to #40-13



- Legend (Where Applicable)**
- |                                    |                        |                          |                      |
|------------------------------------|------------------------|--------------------------|----------------------|
| DB/ST - Distribution Board/Storage | WD - Washer cum Dryer  | W/D - Washer & Dryer     | F - Fridge           |
| WC - Water Closet                  | HS - Household Shelter | RC - Reinforced Concrete | AC - Air-Conditioner |
- Wall not allowed to be hacked or altered

Area includes balcony where applicable and excludes among others, the RC - Reinforced Concrete Ledge and A/C - Air Conditioner Ledge. The plans are subject to change as may be required by relevant authorities. All floor plans and areas are subject to final survey. The balcony shall not be enclosed unless with the approved balcony screen, more particularly illustrated under the header "Approved Balcony Screen". Please refer to the letter containing the Particulars, Documents and Information relating to the development and the unit for the floor plan relating to the unit you intend to purchase. The Sale and Purchase Agreement contains the entire agreement between the developer and the purchaser and supersedes and cancels in all respects all previous representations, warranties, promises, inducements or statements of intention, whether written or oral made by the developer and/or the developer's agent which are not embodied in the Sale and Purchase Agreement.

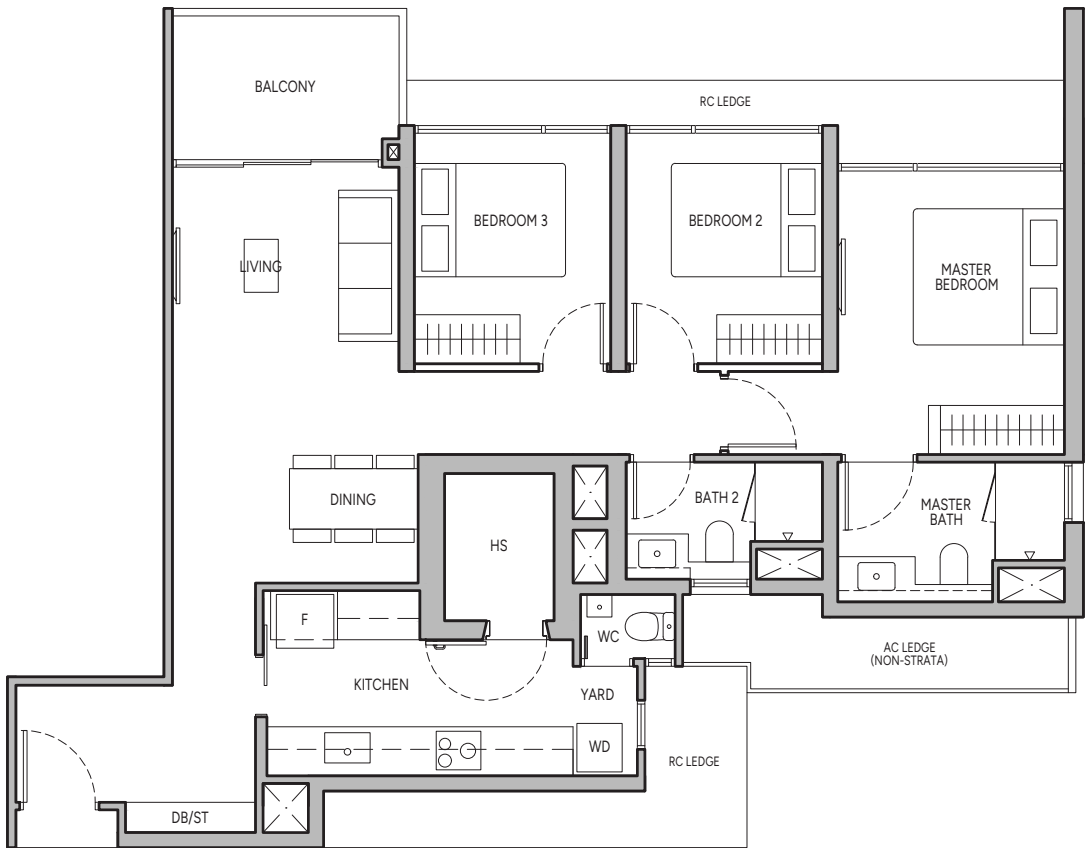


3-BEDROOM PREMIUM

Type C2A

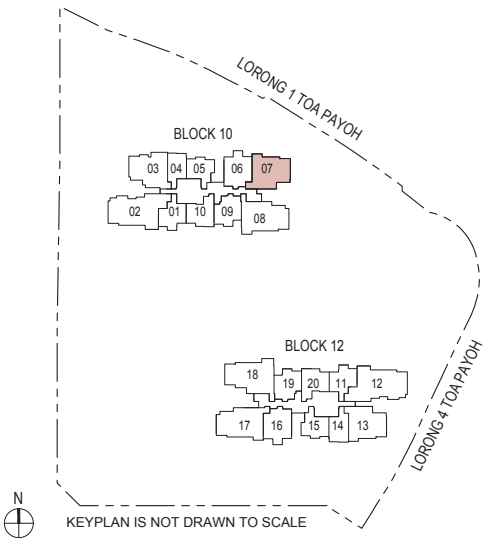
97 sq m / 1044 sq ft

BLK 10 : #02-07 to #40-07



- Legend (Where Applicable)**
- |                                    |                        |                          |                      |
|------------------------------------|------------------------|--------------------------|----------------------|
| DB/ST - Distribution Board/Storage | WD - Washer cum Dryer  | W/D - Washer & Dryer     | F - Fridge           |
| WC - Water Closet                  | HS - Household Shelter | RC - Reinforced Concrete | AC - Air-Conditioner |
- Wall not allowed to be hacked or altered

Area includes balcony where applicable and excludes among others, the RC - Reinforced Concrete Ledge and A/C - Air Conditioner Ledge. The plans are subject to change as may be required by relevant authorities. All floor plans and areas are subject to final survey. The balcony shall not be enclosed unless with the approved balcony screen, more particularly illustrated under the header "Approved Balcony Screen". Please refer to the letter containing the Particulars, Documents and Information relating to the development and the unit for the floor plan relating to the unit you intend to purchase. The Sale and Purchase Agreement contains the entire agreement between the developer and the purchaser and supersedes and cancels in all respects all previous representations, warranties, promises, inducements or statements of intention, whether written or oral made by the developer and/or the developer's agent which are not embodied in the Sale and Purchase Agreement.



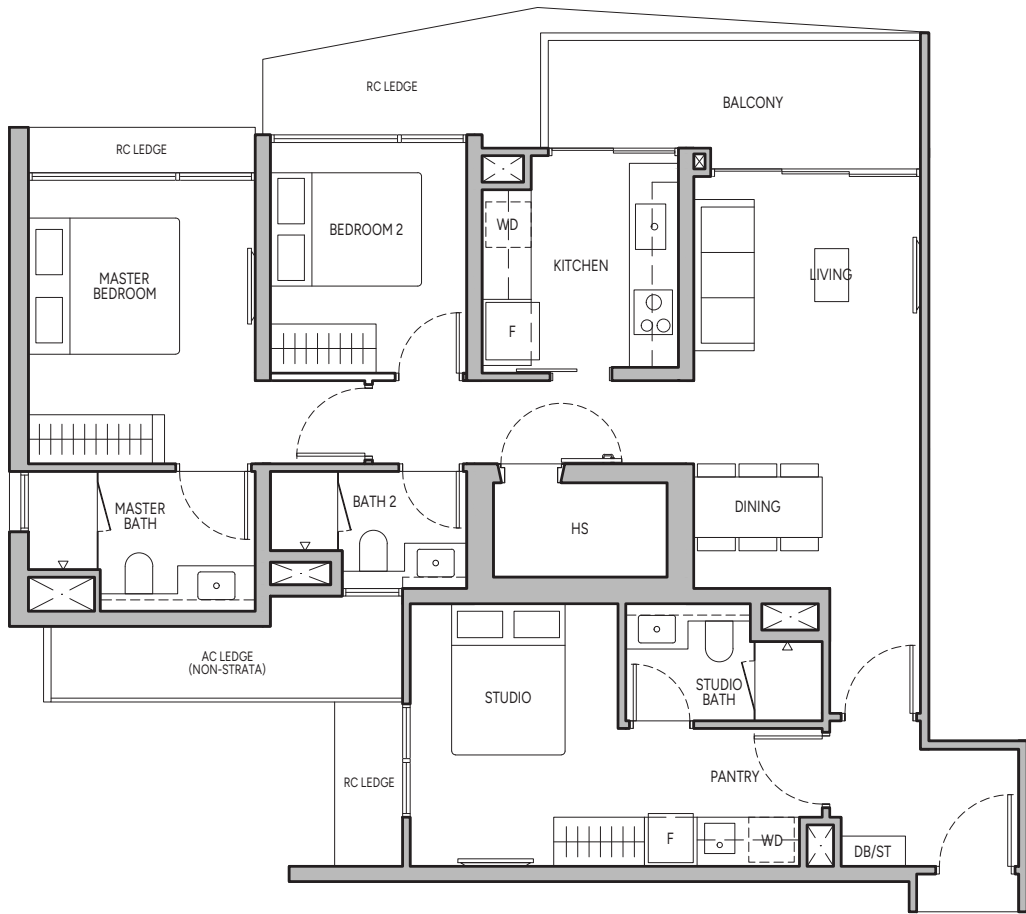


3-BEDROOM DUAL KEY

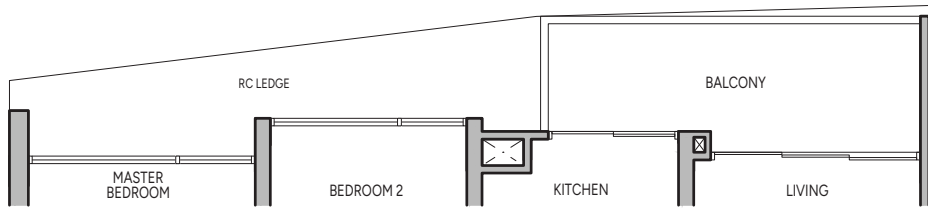
Type C3DK

105 sq m / 1130 sq ft

BLK 10 : #11-03 to #20-03, #31-03 to #40-03

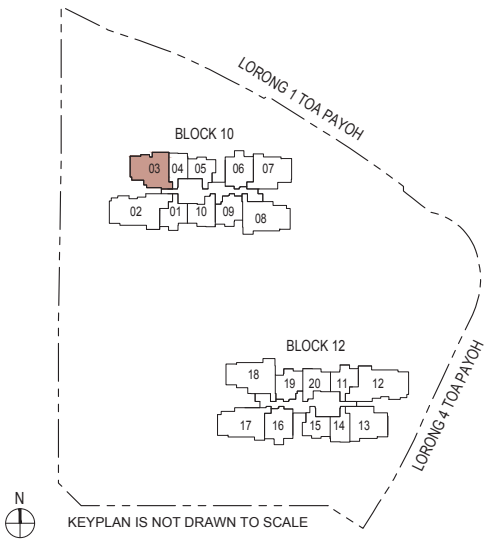


BLK 10 : #02-03 to #10-03, #21-03 to #30-03



**Legend (Where Applicable)**  
DB/ST - Distribution Board/Storage  
WC - Water Closet  
WD - Washer cum Dryer  
HS - Household Shelter  
W/D - Washer & Dryer  
RC - Reinforced Concrete  
F - Fridge  
AC - Air-Conditioner  
Wall not allowed to be hacked or altered

Area includes balcony where applicable and excludes among others, the RC - Reinforced Concrete Ledge and A/C - Air Conditioner Ledge. The plans are subject to change as may be required by relevant authorities. All floor plans and areas are subject to final survey. The balcony shall not be enclosed unless with the approved balcony screen, more particularly illustrated under the header "Approved Balcony Screen". Please refer to the letter containing the Particulars, Documents and Information relating to the development and the unit for the floor plan relating to the unit you intend to purchase. The Sale and Purchase Agreement contains the entire agreement between the developer and the purchaser and supersedes and cancels in all respects all previous representations, warranties, promises, inducements or statements of intention, whether written or oral made by the developer and/or the developer's agent which are not embodied in the Sale and Purchase Agreement.

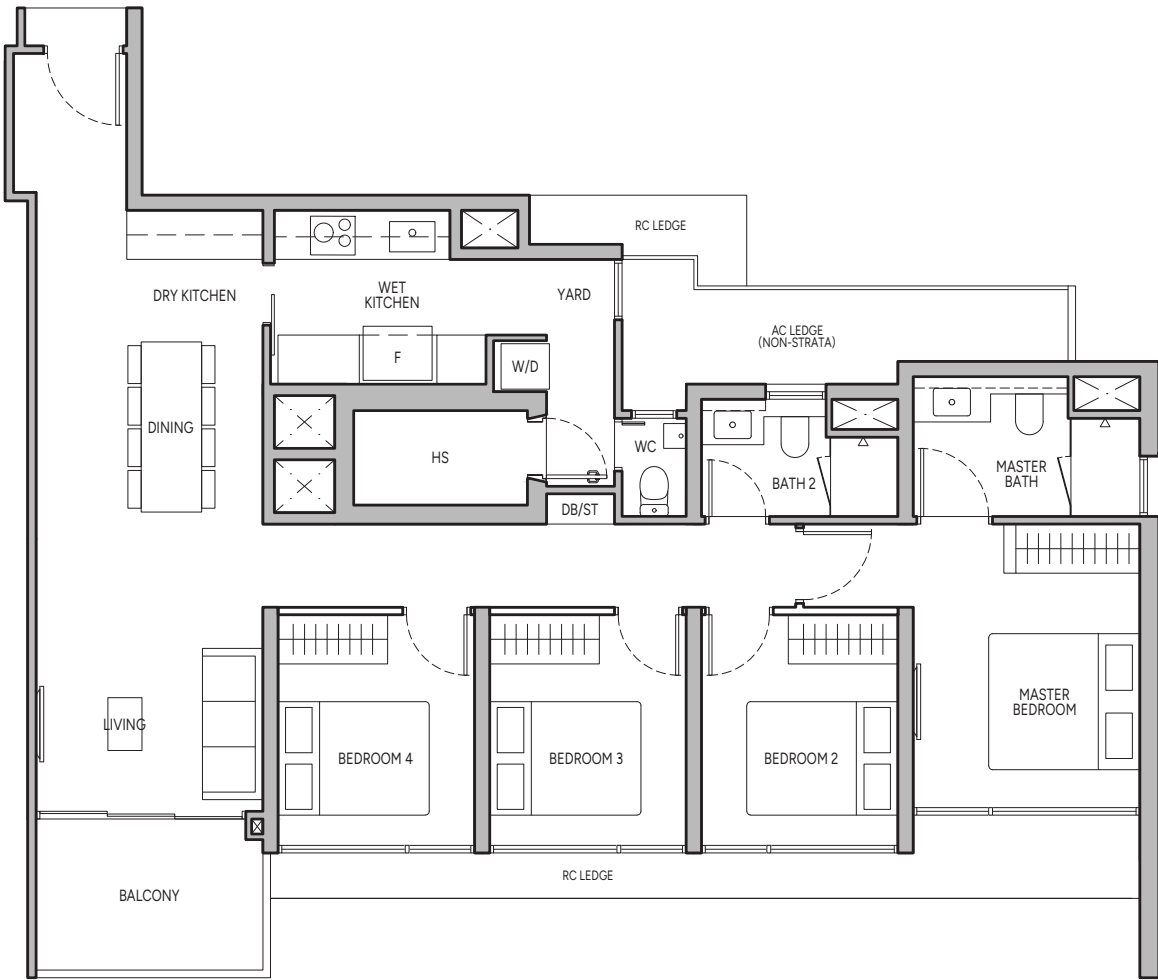


4-BEDROOM

Type D1

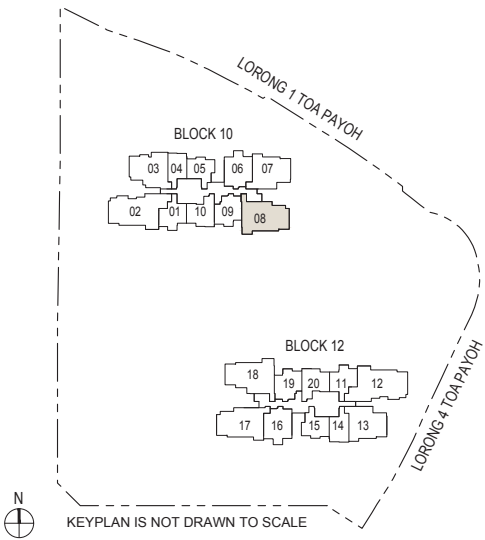
113 sq m / 1216 sq ft

BLK 10 : #02-08 to #40-08



**Legend (Where Applicable)**  
DB/ST - Distribution Board/Storage  
WC - Water Closet  
WD - Washer cum Dryer  
HS - Household Shelter  
W/D - Washer & Dryer  
RC - Reinforced Concrete  
F - Fridge  
AC - Air-Conditioner  
Wall not allowed to be hacked or altered

Area includes balcony where applicable and excludes among others, the RC - Reinforced Concrete Ledge and A/C - Air Conditioner Ledge. The plans are subject to change as may be required by relevant authorities. All floor plans and areas are subject to final survey. The balcony shall not be enclosed unless with the approved balcony screen, more particularly illustrated under the header "Approved Balcony Screen". Please refer to the letter containing the Particulars, Documents and Information relating to the development and the unit for the floor plan relating to the unit you intend to purchase. The Sale and Purchase Agreement contains the entire agreement between the developer and the purchaser and supersedes and cancels in all respects all previous representations, warranties, promises, inducements or statements of intention, whether written or oral made by the developer and/or the developer's agent which are not embodied in the Sale and Purchase Agreement.



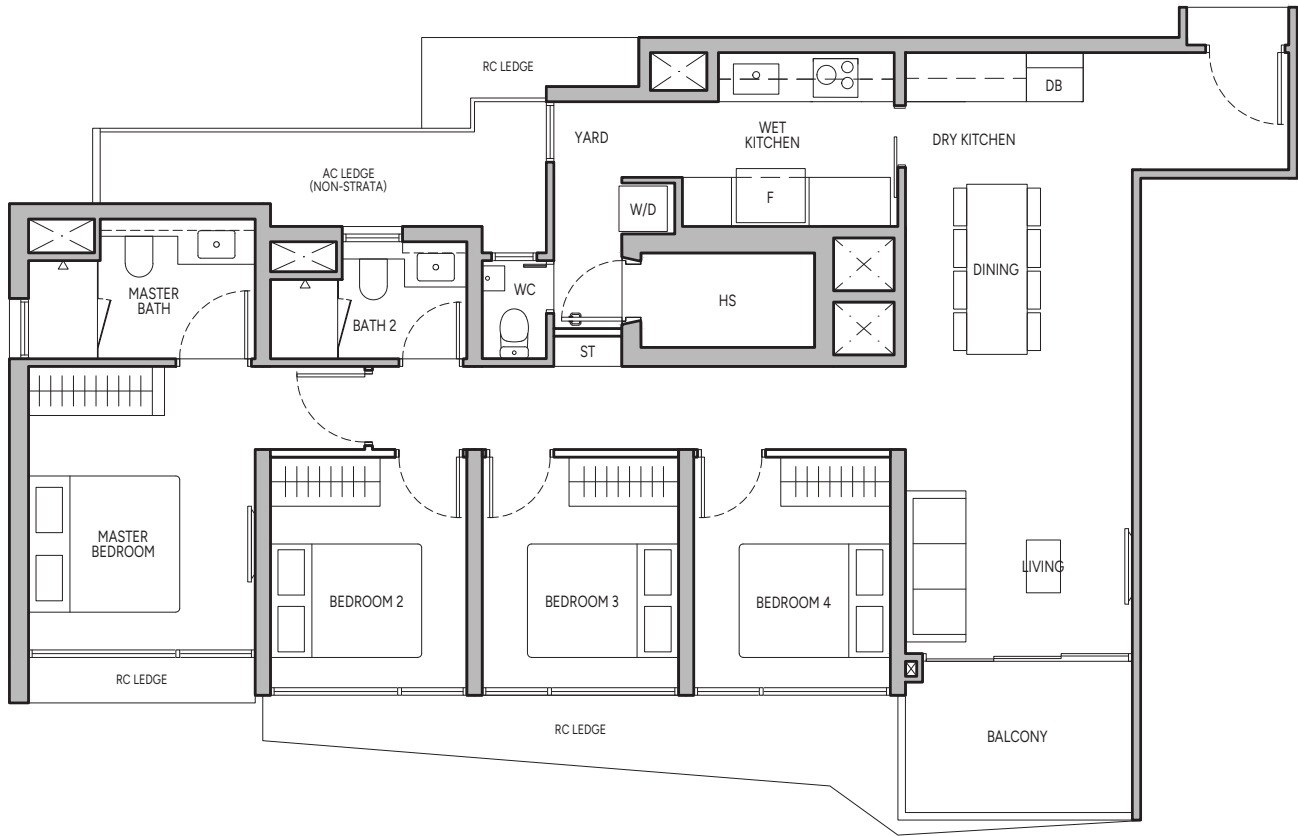


4-BEDROOM

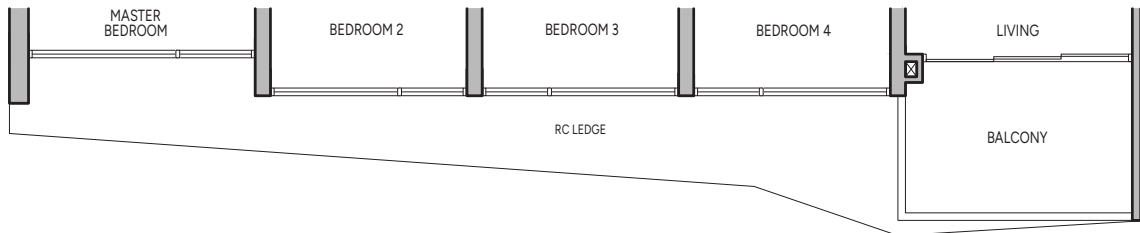
Type D2

113 sq m / 1216 sq ft

BLK 12 : #11-17 to #20-17, #31-17 to #40-17

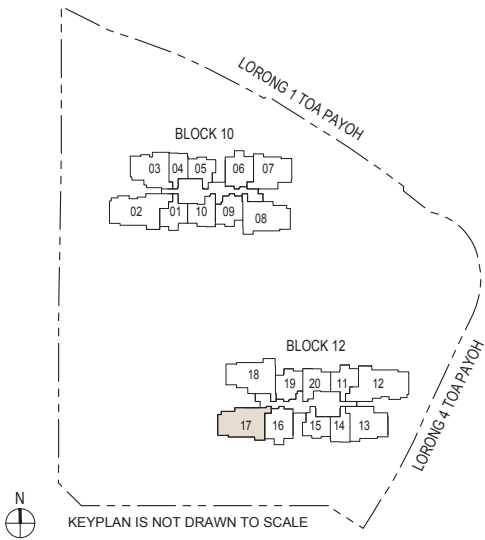


BLK 12 : #02-17 to #10-17, #21-17 to #30-17



**Legend (Where Applicable)**  
DB/ST - Distribution Board/Storage  
WC - Water Closet  
W/D - Washer cum Dryer  
HS - Household Shelter  
W/D - Washer & Dryer  
RC - Reinforced Concrete  
F - Fridge  
AC - Air-Conditioner  
Wall not allowed to be hacked or altered

Area includes balcony where applicable and excludes among others, the RC - Reinforced Concrete Ledge and A/C - Air Conditioner Ledge. The plans are subject to change as may be required by relevant authorities. All floor plans and areas are subject to final survey. The balcony shall not be enclosed unless with the approved balcony screen, more particularly illustrated under the header "Approved Balcony Screen". Please refer to the letter containing the Particulars, Documents and Information relating to the development and the unit for the floor plan relating to the unit you intend to purchase. The Sale and Purchase Agreement contains the entire agreement between the developer and the purchaser and supersedes and cancels in all respects all previous representations, warranties, promises, inducements or statements of intention, whether written or oral made by the developer and/or the developer's agent which are not embodied in the Sale and Purchase Agreement.

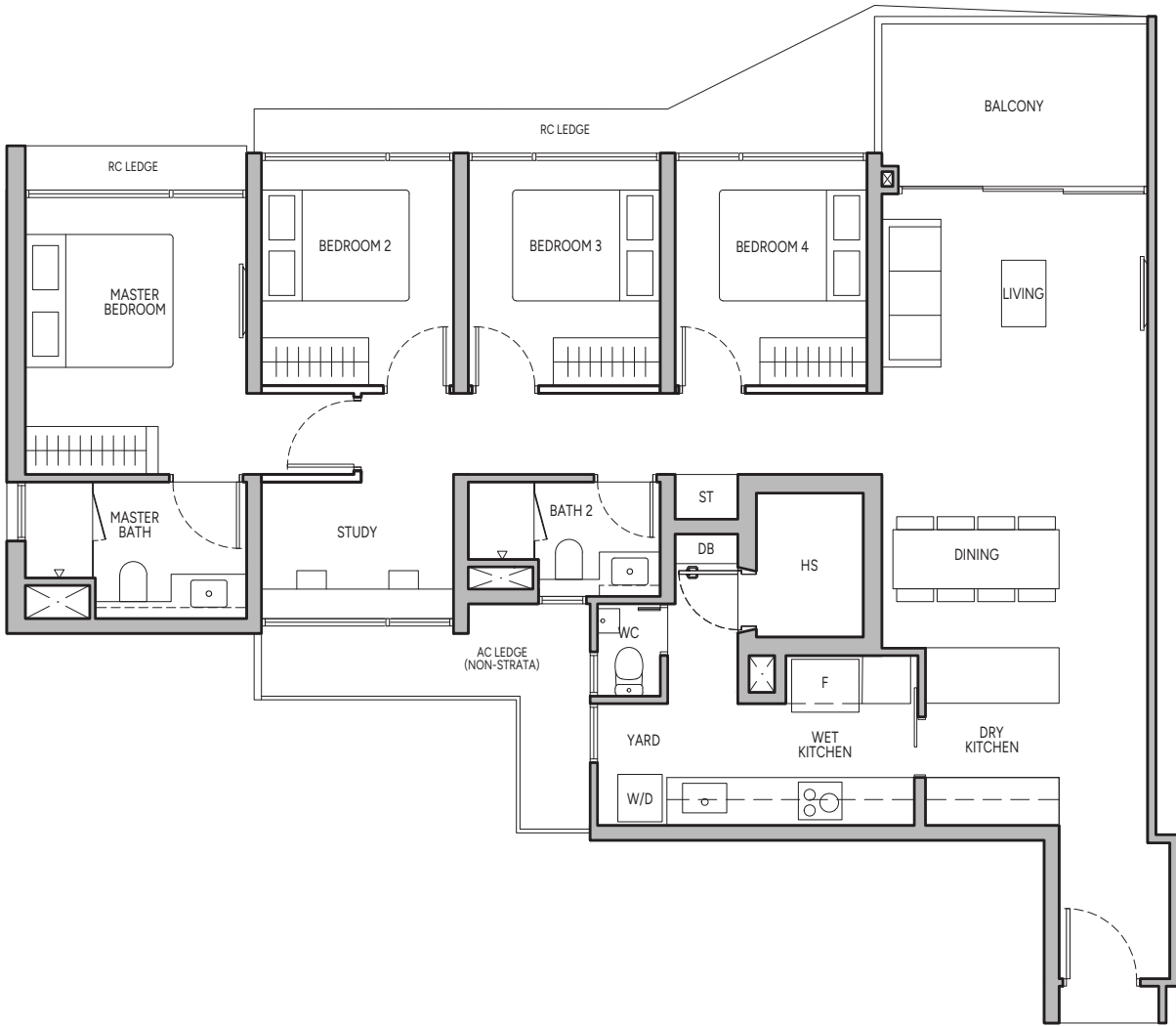


4-BEDROOM PREMIUM + STUDY

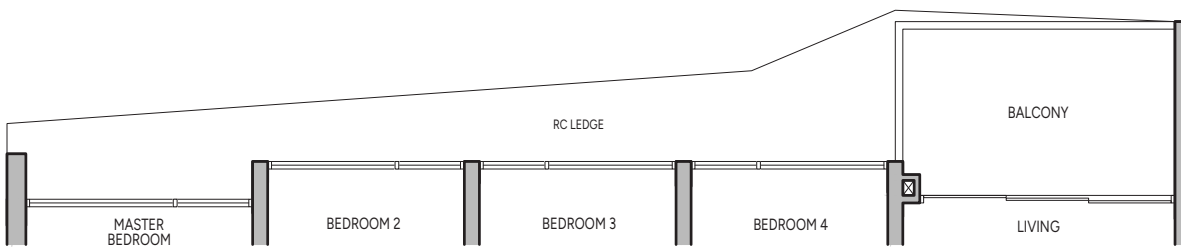
Type D3S

127 sq m / 1367 sq ft

BLK 12 : #11-18 to #20-18, #31-18 to #40-18

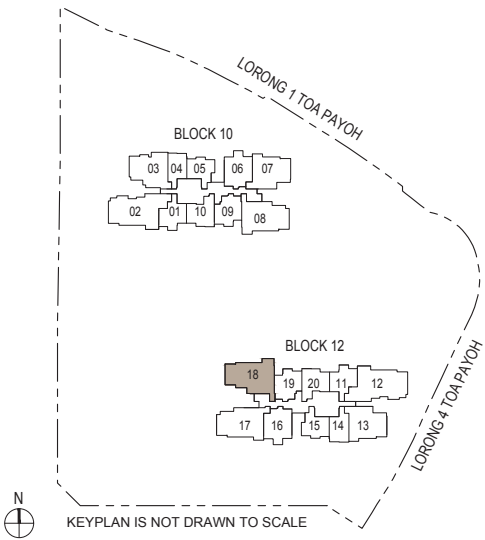


BLK 12 : #02-18 to #10-18, #21-18 to #30-18



**Legend (Where Applicable)**  
DB/ST - Distribution Board/Storage  
WC - Water Closet  
W/D - Washer cum Dryer  
HS - Household Shelter  
W/D - Washer & Dryer  
RC - Reinforced Concrete  
F - Fridge  
AC - Air-Conditioner  
Wall not allowed to be hacked or altered

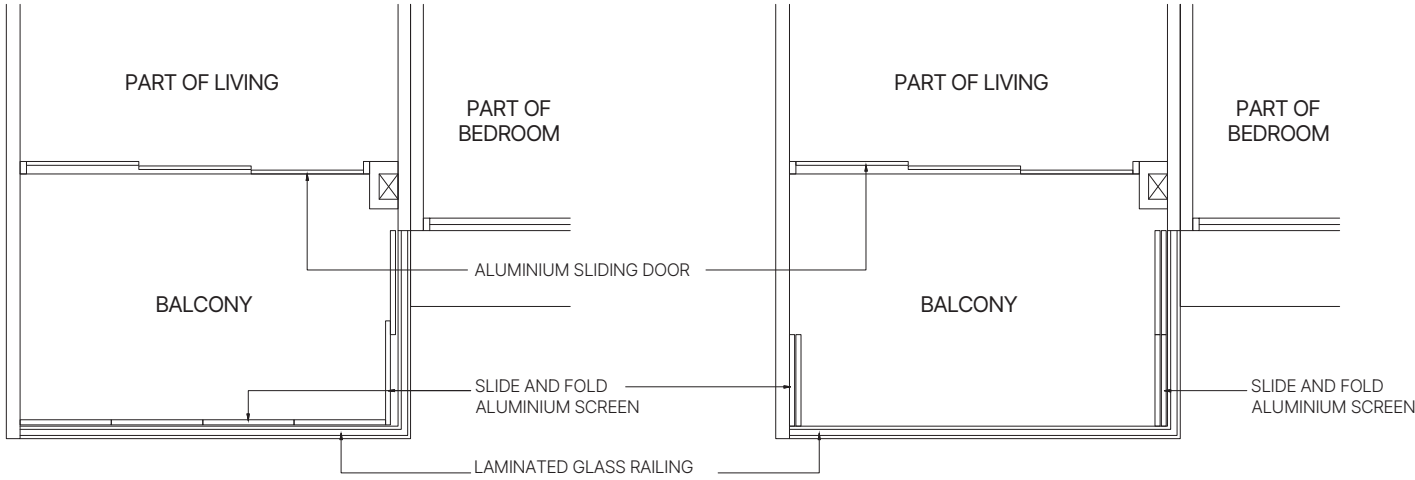
Area includes balcony where applicable and excludes among others, the RC - Reinforced Concrete Ledge and A/C - Air Conditioner Ledge. The plans are subject to change as may be required by relevant authorities. All floor plans and areas are subject to final survey. The balcony shall not be enclosed unless with the approved balcony screen, more particularly illustrated under the header "Approved Balcony Screen". Please refer to the letter containing the Particulars, Documents and Information relating to the development and the unit for the floor plan relating to the unit you intend to purchase. The Sale and Purchase Agreement contains the entire agreement between the developer and the purchaser and supersedes and cancels in all respects all previous representations, warranties, promises, inducements or statements of intention, whether written or oral made by the developer and/or the developer's agent which are not embodied in the Sale and Purchase Agreement.





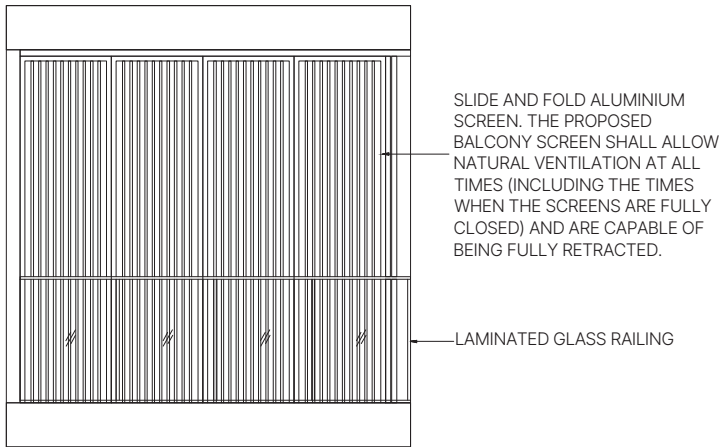
APPROVED BALCONY SCREEN

Typical Units

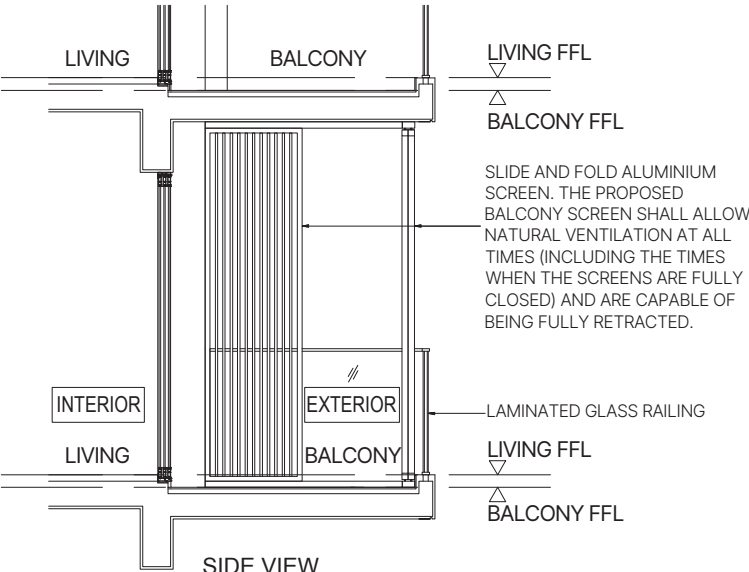


TYPICAL RETRACTABLE BALCONY SCREEN (FULLY CLOSED) - PLAN

TYPICAL RETRACTABLE BALCONY SCREEN (FULLY RETRACTED) - PLAN



FRONT VIEW



SIDE VIEW

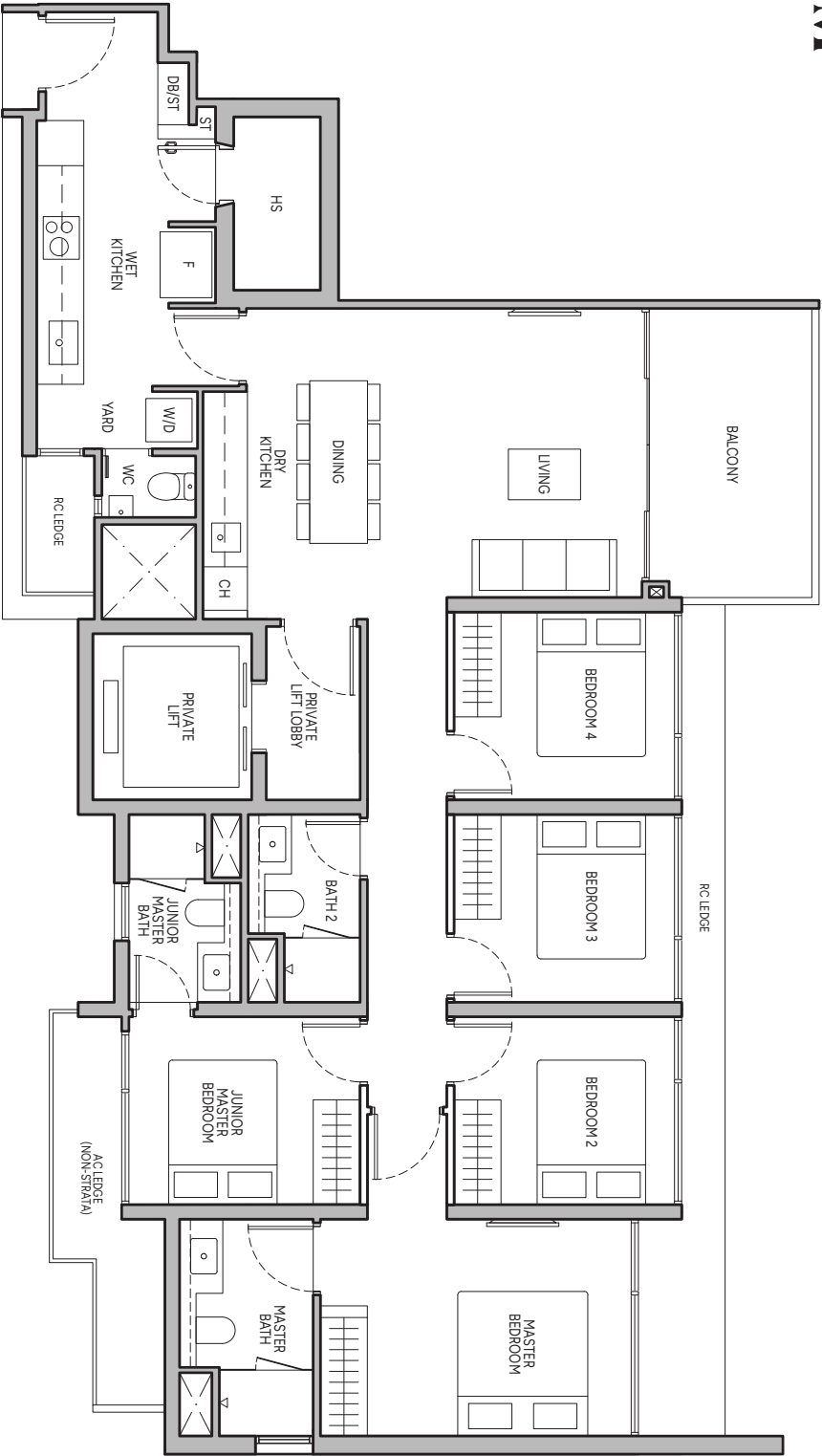
Note:  
The balcony shall not be enclosed unless with the approved balcony screen as shown above.  
The cost of screen and installation shall be borne by the Purchaser.  
Where required to facilitate installation, the Architect reserves the right to determine appropriate details not limited to fixing details and colour tones.

5-BEDROOM

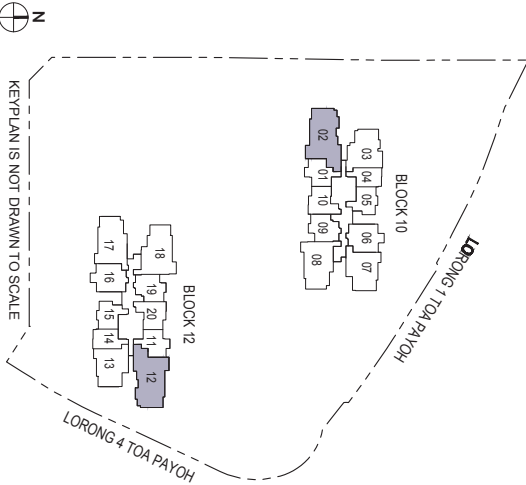
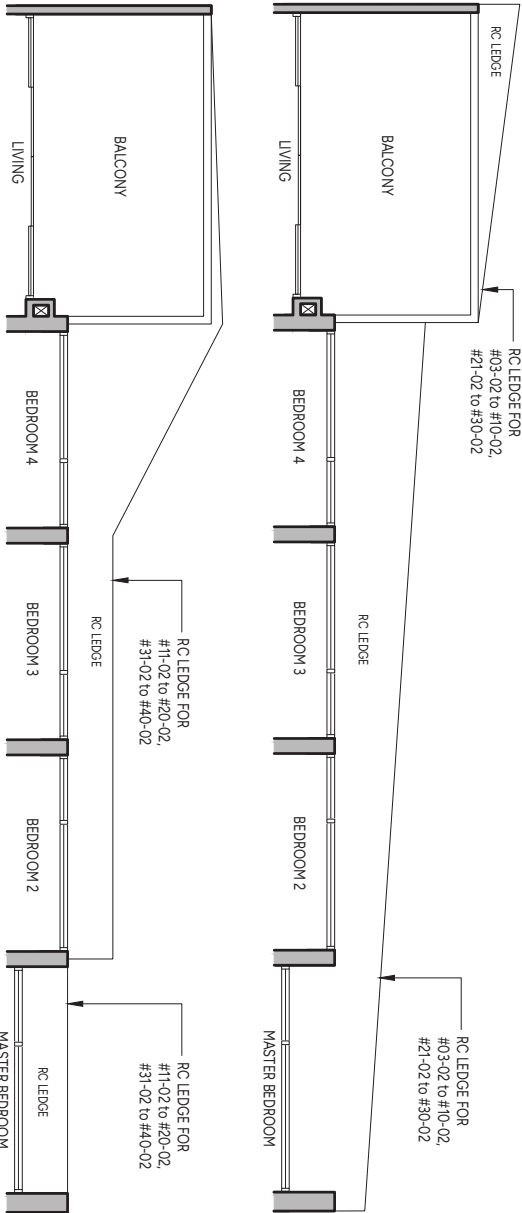
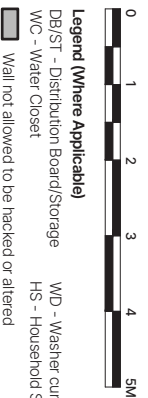
Type E1

135 sq m / 1453 sq ft

BLK 12 : #02-12 to #40-12



BLK 10 : #03-02 to #40-02





Sales Enquiries  
6877 1818

JOINTLY DEVELOPED BY



While reasonable care has been taken in the preparation of this brochure, neither the developer nor its agents assume any responsibility for any inaccuracies or omissions. The statements, information and depictions in this brochure are not to be relied upon as statements or representations of fact, offers or warranties (whether expressly or impliedly) by the developer or the developer's agents and they are not intended to form any part of the contract for the sale of the housing units. Visual representations such as renderings, illustrations, pictures and drawings are artist's impressions only and photographs are only decor suggestions and cannot be regarded as representations of fact. The brand, colour and model of all materials, fittings, equipment, finishes, installations and appliances to be supplied shall be provided subject to the developer's architect's selection, market availability and at the sole discretion of the developer. All information and specifications contained in this brochure are subject to such changes as are required by the relevant authorities or the developer. All plans are subject to any amendments which are required by the relevant authorities. All areas and measurements stated in the brochure are approximate only and subject to final survey. The Sale and Purchase Agreement contains the entire agreement between the developer and the purchaser and supersedes and cancels in all respects all previous representations, warranties, promises, inducements or statements of intention, whether written or oral made by the developer and/or the developer's agent which are not embodied in the Sale and Purchase Agreement.

Vendor (Developer): Transcend Residential (Toa Payoh) Pte. Ltd. (Registration No. 202348967G) • Housing Developer's Licence No.: C1506 • Tenure of Land: Leasehold of 99 years commencing from 13 February 2024 • Encumbrances: Mortgage IJ/281825D registered in favour of Bank of China Limited • Lot No.: Lot 11160V MK 17 at Lorong 1 Toa Payoh • Expected Date of Vacant Possession: 31 May 2030 • Expected Date of Legal Completion: 31 May 2033

This brochure is printed on eco-friendly paper, December 2024.